



Twynning Gardens

TWYNING, GLOUCESTERSHIRE

FreemanHomes

HBF Home
Builders
Federation



Customer Satisfaction 2025



ENERGY-EFFICIENT
EPC A-RATED HOMES



ZERO
CARBON
LIVING



Twynning Gardens

NEW HOMES FULL OF CHARACTER

By **Freeman**Homes

FreemanHomes



Welcome to Twynning Gardens - a place where our vision for Zero Carbon Living meets the character of a cherished Gloucestershire village. Each property pairs thoughtful architecture with market-leading renewable technologies to deliver A-rated energy performance, lower running costs and effortless, everyday comfort. Designed in harmony with their surroundings, these properties offer more space, more style and an outstanding specification, so you can enjoy modern living without compromise.

Luke Freeman

Founder & CEO



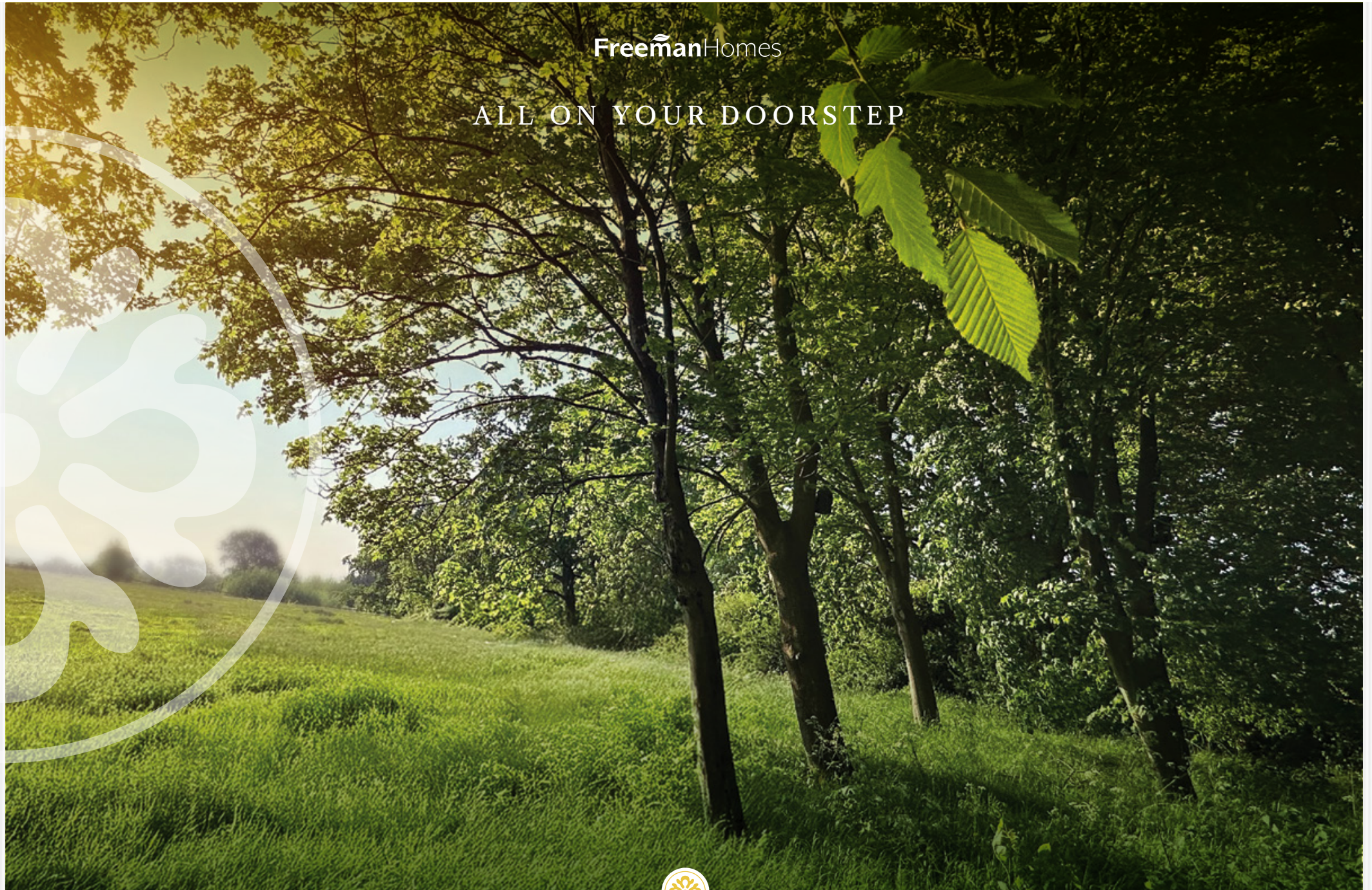
At Twynning Gardens, we've focused on how your home lives as well as how it looks. Versatile layouts, generous outdoor spaces, and a premium sustainable specification come together to create a warm, contemporary and considerate feel. For early reservations, our Freeman Choice range lets you personalise cabinetry, bathroom tiles, flooring, security and sustainable upgrades, so your new home feels truly yours from day one. Our friendly team of new homes experts is here to guide you through every step as you discover the space, style, surrounding scenery, and smarter energy of Twynning Gardens.

Hayley Coombs

Sales & Operations Director

FreemanHomes

ALL ON YOUR DOORSTEP





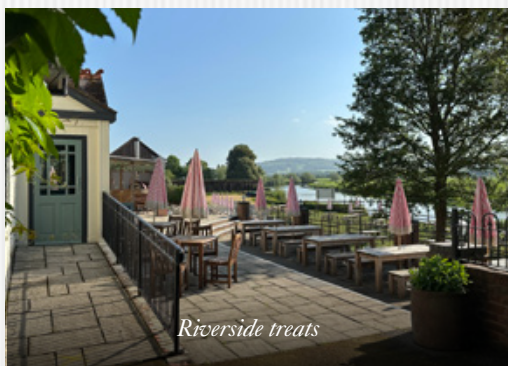
Twynning - Rich in wildlife



Riverside walks along Shakespeare's Way



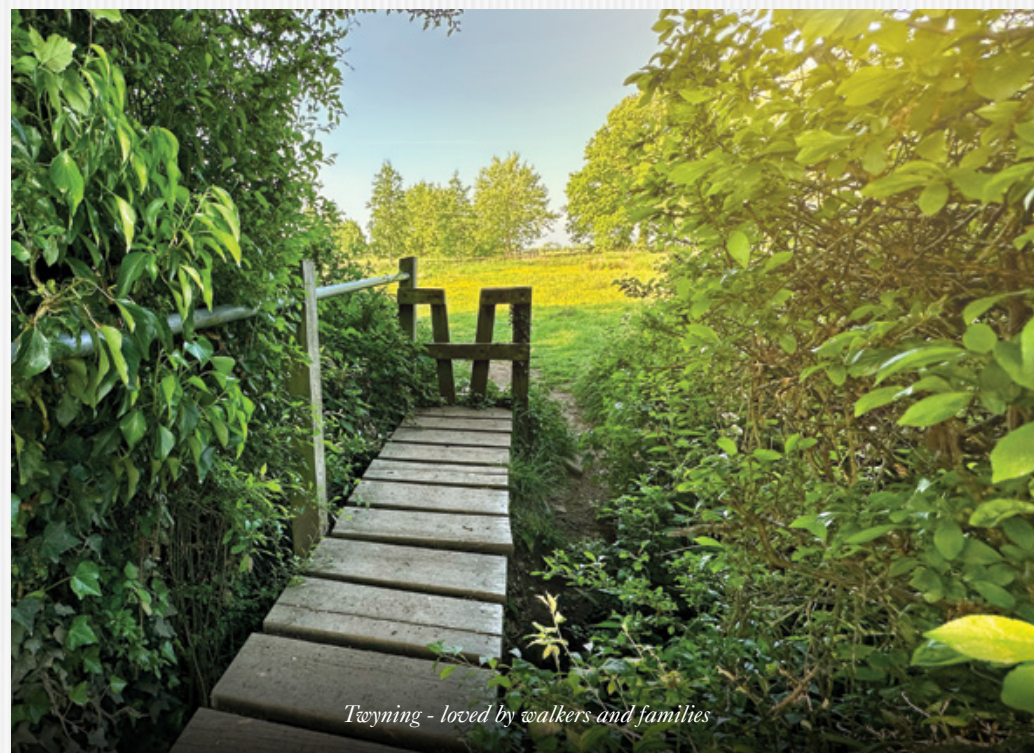
Twynning Village Green



Riverside treats



Twynning Village Hall



Twynning - loved by walkers and families

Twynning local countryside views



Twynning Gardens

A WELL-CONNECTED COMMUNITY



Distances and times are approximate sourced from Google Maps taking the fastest route during usual traffic.

WHAT'S NEARBY

Eat & Drink

Twyning's riverside setting and rich heritage provide a striking backdrop for relaxed and enjoyable dining. The Fleet Inn, located directly on the River Avon, is a standout local favourite, serving classic pub fare with the added appeal of moorings for visiting boaters and panoramic waterside views. Just a short stroll from the village green, The Village Inn offers a welcoming, traditional pub atmosphere and a well-crafted seasonal menu. Tewkesbury is only three miles away and offers everything from independent cafés to relaxed bistros and family-friendly eateries. For a curated culinary experience, Cheltenham presents an acclaimed dining scene that includes artisan bakeries, contemporary bistros, and award-winning restaurants.

Shopping

At the heart of the village, Twyning's community-run Village Shop and Post Office is a convenient spot for everyday essentials, fresh produce, and local goods. A short drive to Tewkesbury provides access to supermarkets, independent retailers, and a traditional street market. Cheltenham features a sophisticated mix of high-street names, designer labels, and premium food stores such as Waitrose and M&S Foodhall.

Just a short drive from Twyning, the newly opened Cotswolds Designer Outlet brings together well-known designer labels and

popular high-street favourites with independent brands that reflect the charm and craftsmanship of the local area. Thoughtfully designed with open-air walkways, greenery, and a selection of cafés and casual dining spots, it is an inviting place to shop, meet friends, or enjoy a relaxed afternoon out. With convenient parking and easy access from the M5, it has quickly become a go-to retail destination for the area.



Twyning Village Shop & Post Office



Cotswolds Designer Outlet

Culture

Twynning and its surroundings enjoy a rich cultural landscape, with events that reflect both local tradition and national acclaim. Tewkesbury's popular Medieval Festival and Food & Drink Festival attract thousands each year, while The Roses Theatre offers a varied programme of film, theatre, and live performance. In nearby Cheltenham, renowned annual festivals celebrate literature, jazz, food, and science, making it one of the UK's leading cultural destinations. Within the village, community groups such as the Twynning Community Choir and Gardening Club bring neighbours together throughout the year.

Health & Wellbeing

Twynning's natural beauty and riverside setting promote a healthy, outdoor lifestyle. Scenic walking trails follow the Avon and pass through nearby nature reserves such as Upham Meadow, offering peaceful routes for walking, cycling, and birdwatching. Informal sports on the village green, including cricket and football, bring residents together, while boating and fishing remain popular pursuits on the river. Fitness facilities such as Gym & Tonic are just a ten-minute drive away, with additional leisure centres and wellness classes readily accessible in Tewkesbury and Cheltenham.

Education

Twynning is ideally located for families seeking excellent educational opportunities. The village is home to Twynning Church of England Primary School, known for its supportive community and strong foundations. For secondary education, Tewkesbury School is a well-regarded local choice. The area is also within reach of top-performing grammar schools, including Pate's Grammar School in Cheltenham and Sir Thomas Rich's in Gloucester. For independent education, Cheltenham College and Cheltenham Ladies' College offer exceptional academic standards and extensive co-curricular programmes.



Alderton's stunning countryside setting

FreemanHomes

SAY HELLO TO A BRIGHT AND SPACIOUS HOME



Zero
ZERO
CARBON
LIVING



Twynning Gardens

TWYNNING GARDENS | 7

YOUR SIGNATURE SPECIFICATION

Let your personality shine through in your new home with the Freeman Choice of options and upgrades. We will talk you through the items available and offer more detailed information to assist with decision making, helping you to personalise your home.

The homes at Twynning Gardens feature Freeman Homes' Signature Specification, combining meticulous attention to detail with premium branded appliances, technologies and products.

Kitchen

- Beautifully designed, fully fitted kitchen
- Soft close doors and drawer units with integrated cutlery tray
- Choice of worktops with matching upstand (subject to build stage)
- NEFF integrated oven
- Integrated dishwasher
- Integrated 70/30 fridge freezer
- NEFF induction hob, stainless steel splashback and cooker hood
- Utility room with space for one or two appliances (where house type and design dictates)



Bathroom, En suite and Cloakroom

- Roca sanitaryware
- Hansgrohe chrome fittings
- Mira Evoco shower with low profile shower tray to bathrooms and en suites
- Wet underfloor heating to ground floor, and electric underfloor heating to first floor, bathrooms and en suites
- Classic straight towel rail in chrome to bathrooms and en suites, with dual fuel heating element to control separately to central heating
- Shaver socket to bathrooms and en suites
- Porcelanosa half-height tiles with full-height wall tiles to shower enclosure and bath



Finishes

- Luxury carpet to stairs, landing, bedrooms and living room
- Hard flooring to kitchen and hallway
- Fitted wardrobes with sliding doors to bedrooms (as design dictates)
- Natural stained oak handrail
- Internal walls and ceilings finished in Crown White
- Internal woodwork finished in Crown Satinwood, White
- uPVC windows, patio, utility, and garage personnel doors finished in Agate Grey
- Composite natural grained front door with clear glass finished in Reseda Green, Olive Green or Agate Grey dependent on plot
- Glazed sliding doors or French patio doors leading to patio and garden
- Oak Veneer prefinished internal doors

Safety and Security

- External multi-point locking door with thumb lock
- Window locks



Energy-efficient Heating, Lighting & Electrical

- Viridian roof integrated Solar PV panels including 5.0 kWh storage battery
- NIBE Air Source Heat Pump
- Project EV 7.3kW electric car charging point
- Underfloor heating and/or Stelrad Compact radiators (as design dictates)
- Low energy downlights and pendant lighting (as design dictates)
- Ample sockets throughout, including BT point in living room
- TV points to kitchen, living room and all bedrooms
- USB charging port sockets to kitchen and master bedroom
- Pendant light to loft

Garden & Garage

- Lighting and double power socket to garage
- Up and over garage door
- External tap
- Landscaping to front garden and turf to back garden
- External, low-level, wildlife-friendly lights to front and back of property
- Patio to rear garden

ENERGY-EFFICIENT EPC **A** RATED PROPERTIES



Sustainable Materials

We adopt a fabric-first approach to design, partnering with market-leading brands and local suppliers to maximise the property energy performance. Herefordshire-based Taylor Lane's timber frame construction utilises timber sourced from certified managed forests, offering the lowest CO₂ cost and heightened thermal efficiencies.

Zero Carbon Living

In addition to our sustainable designs, NIBE air source heat pumps and Viridian roof-integrated solar PV panels enable us to present Zero Carbon Living, EPC A-rated properties with significantly lower running costs.



SUSTAINABLE LIVING
AT TWYNING GARDENS



PROTECTING OUR ENVIRONMENT

Hedgehog-friendly fencing allows hedgehogs to roam freely in search of food and mate

•

Hedgehog houses within the shared open areas provide shelter and somewhere to nest

•

Bird boxes provide a home for nesting birds, and bat boxes provide a place for bats to roost

•

Significant ecology landscape planting

•

Dual flush mechanism to toilets to reduce water use

•

Double-glazed windows providing a high level of thermal insulation and reduced heat loss

•

High levels of insulation within roof spaces and external wall cavities, to limit heat loss in the winter and reduce heat gain in the summer

•

Significant recycling of waste materials and packaging during the construction of each home

•

Rainwater butt and garden composting bin

BUILDING GREENER LIVING BETTER

Twynning Gardens creates a place for people and nature. In addition to our sustainable design, materials selection, renewable technologies and wildlife-friendly features.

Wildlife-friendly features such as hedgehog-friendly fencing, bird and bat nesting boxes, and bee bricks provide a place for people and nature.

Ecology landscaping and wildlife buffer zones boost biodiversity.

We align ourselves and our homes with 7 of the United Nations' Sustainable Development Goals to ensure we have a positive impact locally, and worldwide.



Stay connected at home

With fast broadband, everyone in the house can be online, keeping in touch with friends and family, working from home, watching Netflix, and doing the weekly shop, all at the same time.

Twynning benefits from fibre enabled broadband. The village also falls under Fastershire, which is a partnership between Herefordshire Council and Gloucestershire County Council, that is bringing even faster broadband to the two counties. This means you can upgrade to ultrafast fibre through your provider and access broadband speeds of up to 1,000Mbps.

Space to work from home

Whether it's a downstairs study, upstairs study, spare room converted into a home office, or a dedicated corner of a spacious open plan layout, we have a wide range of designs to suit your work from home style. Better still, inspire productivity and put your own stamp on your work-friendly space.



YOUR FREEMAN CHOICE

Once you have chosen your Freeman Home, it's time to personalise it and make it your own. We have spent a lot of time talking to our customers, sourcing items and researching ideas to create the perfect specification.

Our customers tell us they want to choose colours, finishes and add personal touches to make their home truly individual.

You may have some ideas about what you want, or perhaps you are looking for some inspiration. The Freeman Choice helps you personalise your property and ensure it feels like home from the moment you step inside.

*Create your perfect home
at Twynning Gardens*



FreemanHomes

CELEBRATING THE TIMELESS CHARM
OF GLOUCESTERSHIRE'S GARDENS



Twynning Gardens

HOME & HERITAGE: THE GLOUCESTERSHIRE GARDENS COLLECTION

The property designs at Twynning Gardens are named after Gloucestershire's gardens to honour the natural heritage of this beautiful county. These living landscapes embody considered design, seasonal rhythm, and enduring beauty - values we build into every home. Like pathways guiding discovery and borders framing moments, our layouts invite light, connection, and effortless flow. Each name becomes a promise of rooted character, thoughtful detail, and a gentle dialogue with nature. It's our tribute to local heritage and a compass for modern living, connecting past inspiration to future wellbeing, so your home feels grounded, uplifting, and uniquely Gloucestershire.

*"To nurture a garden is to
feed not just the body, but the soul."*

Alfred Austin

WESTBURY

Westbury Court Gardens is among the UK's few surviving 17th-century Dutch water gardens, featuring canals, a pavilion, and topiary.

www.nationaltrust.org.uk



HIDCOTE

Hidcote Manor Garden, is a pioneering Arts-and-Crafts garden of intimate 'rooms' created by Lawrence Johnston near Chipping Campden.

www.nationaltrust.org.uk



KIFTSGATE

Kiftsgate Court Gardens, beside Hidcote, is famed for Rosa filipes 'Kiftsgate' and three generations of women gardeners' stewardship.

www.kiftsgate.co.uk



MISERDEN

Miserden's 17th-century walled garden features long mixed borders, a Lutyens yew walk, ancient trees, and views over the Golden Valley near Stroud.

www.miserden.org



COLESBOURNE

Colesbourne Park hosts one of Britain's premier snowdrop collections, with more than 300 varieties, alongside an arboretum and lakeside walks near Cheltenham, Gloucestershire.

www.colesbournegardens.org.uk



STANWAY

Stanway House water garden features Britain's tallest single-jet fountain, gravity-fed to 300 feet, set within a Baroque landscape in the Cotswolds.

www.stanwayfountain.co.uk

SEZINCOTE

Sezincote House and gardens exemplify Neo-Mughal design, with a copper dome, orangery, and a Repton landscape that influenced the Brighton Pavilion, near Moreton-in-Marsh, on the Gloucestershire estate.

www.sezincote.co.uk



HOME DESIGN SELECTION

5 BEDROOMS



HIDCOTE

218 sqm - 2,349 sqft

PAGE 20



WESTBURY

215.3 sqm - 2,317 sqft

PAGE 22

4 BEDROOMS



COLESBOURNE

165 sqm - 1,778 sqft

PAGE 24



KIFTSGATE

158 sqm - 1,702 sqft

PAGE 26



MISERDEN

130 sqm - 1,396 sqft

PAGE 28



SEZINCOTE

129 sqm - 1,390 sqft

PAGE 30



STANWAY

101 sqm - 1,090sqft

PAGE 32

3 BEDROOMS



ENERGY-EFFICIENT
EPC A-RATED HOMES



Twynning Gardens

ENJOY
FIRST-CHOICE
SELECTION

Reserve your property
off plan today



Scan me to register
your interest

01594 543354

twynning@freemanhomes.co.uk
www.freemanhomes.co.uk

These particulars are set out as a general outline for guidance only. The information in this brochure does not in any way form part of a contract or warranty. Details may be subject to change.



ZERO
CARBON
LIVING

NORTH



ENERGY-EFFICIENT
EPC A-RATED HOMES



HIDCOTE

218 sqm / 2,349 sqft

SPECIFICATION OVERVIEW

- Exceptionally spacious, detached five-bedroom property
- Energy-efficient, EPC A-rated home
- Sleek roof-integrated Viridian Solar PV panels, 5kW storage battery and market leading NIBE Air Source Heat Pump
- Large, beautifully designed kitchen with NEFF appliances
- French doors from kitchen to patio
- Utility with sink and external door
- Dual aspect living room with sliding doors to patio
- Spacious entrance hall
- Separate dining room and a dual aspect study
- Family bathroom with separate shower
- En suites to bedroom 1 & 2
- Fitted wardrobes with sliding doors to bedrooms 1, 2 & 3
- Double garage with driveway parking for four cars
- Project EV electric car charging point
- Generous private garden
- Large heritage oak porch

THE HIDCOTE KEY FEATURES



5 BEDROOMS



TRADITIONAL LAYOUT



FAMILY BATHROOM



2 EN SUITE



FITTED WARDROBES



DOUBLE GARAGE



UTILITY



HOME WORKING



ZERO CARBON LIVING



African Ivory roughcast render over red brick plinth with Rustic Red roof tile

PLOT

3

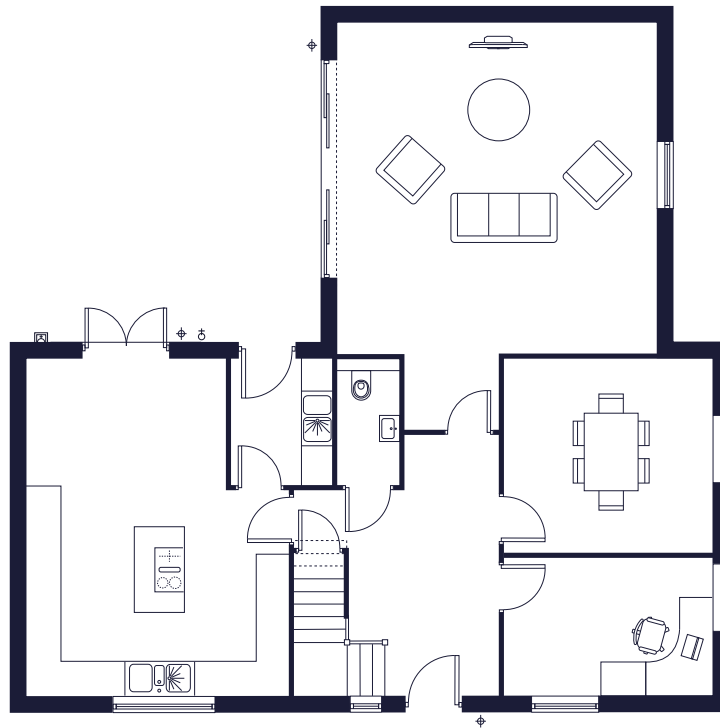
EPC **A** RATED HOME

All measurements are approximate and may vary on site. CGIs and floor plans are indicative only and are subject to change. Please refer to the sales advisor for specific details as layout may be mirrored on individual plots.

HIDCOTE

218 sqm / 2,349 sqft

- Exterior Socket
- Light
- Tap



GROUND FLOOR



FIRST FLOOR

PLOT

3

Kitchen	6.07m x 4.73m	19' 11" x 15' 6"
Dining Room	3.51m x 3.76m	11' 6" x 12' 4"
Living Room	5.99m x 5.73m	19' 8" x 18' 10"
Utility	2.27m x 1.87m	7' 5" x 6' 2"
Study	2.47m x 3.77m	8' 1" x 12' 4"

Bedroom 1	4.96m x 5.73m	16' 3" x 18' 10"
Bedroom 2	2.96m x 4.36m	9' 9" x 14' 4"
Bedroom 3	2.97m x 4.73m	9' 9" x 15' 6"
Bedroom 4	3.02m x 4.02m	9' 11" x 13' 2"
Bedroom 5	3.02m x 3.59m	9' 11" x 11' 9"



Detached Double Garage
39.15 sqm / 421.4 sqft

WESTBURY

215 sqm / 2,317 sqft

SPECIFICATION OVERVIEW

- Exceptionally spacious, detached five-bedroom property
- Energy-efficient, EPC A-rated home
- Sleek roof-integrated Viridian Solar PV panels, 5kW storage battery and market leading NIBE Air Source Heat Pump
- Large, beautifully designed kitchen with NEFF appliances
- Kitchen island with breakfast bar
- Pantry with shelving
- French doors from kitchen to patio
- Utility with sink and external door
- Separate study
- Separate dining room with connecting doors for a layout that flows
- Spacious entrance hall and upstairs landing
- Family bathroom with separate shower
- En suites to bedroom 1 & 2
- Fitted wardrobes with sliding doors to bedrooms 1, 2 & 4
- Double garage with driveway parking for four cars
- Project EV electric car charging point
- Private garden
- Large heritage lean-to oak porchh

THE WESTBURY KEY FEATURES



5 BEDROOMS



TRADITIONAL LAYOUT



FAMILY BATHROOM



2 EN SUITE



FITTED WARDROBES



PANTRY



UTILITY



HOME WORKING



DOUBLE GARAGE



ZERO CARBON LIVING



Red brick, Anthracite roof tiles.

PLOT

19




EPC **A** RATED HOME

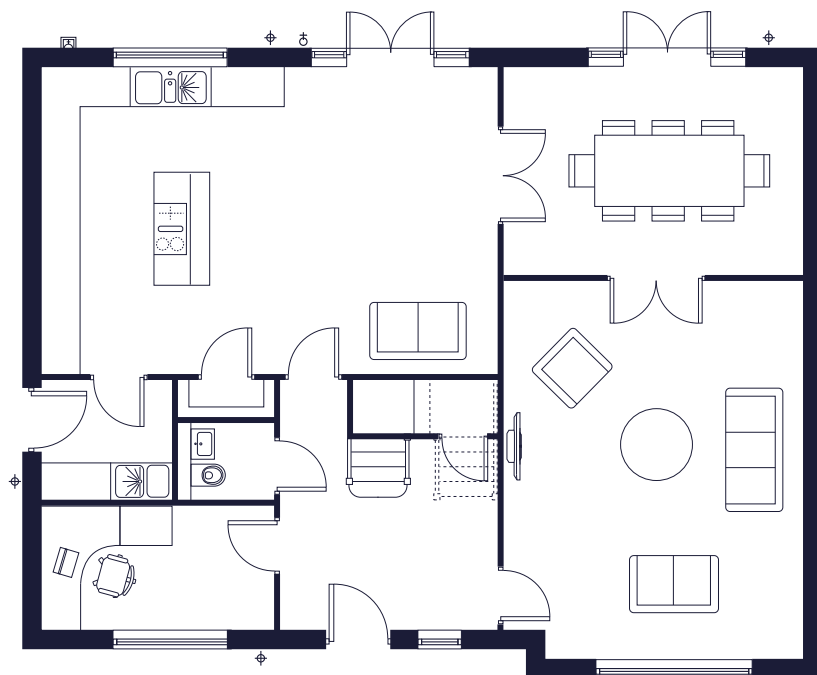
All measurements are approximate and may vary on site. CGIs and floor plans are indicative only and are subject to change. Please refer to the sales advisor for specific details as layout may be mirrored on individual plots.

FreemanHomes

WESTBURY

215 sqm / 2,317 sqft

-  Exterior Socket
-  Light
-  Tap



GROUND FLOOR



FIRST FLOOR

PLOT

19

Living Room	5.97m x 4.73m	19' 7" x 15' 6"
Kitchen	4.58m x 4.26m	15' 0" x 14' 0"
Dining Room	3.27m x 4.73m	10' 9" x 15' 6"
Family Room	4.86m x 2.95m	15' 11" x 9' 8"
Utility	1.90m x 2.06m	6' 2" x 6' 9"
Pantry	0.60m x 1.52m	2' x 5'
Study	1.96m x 3.67m	6' 5" x 12' 0"

Bedroom 1	4.29m x 3.40m	14' 1" x 11' 2"
Bedroom 2	3.96m x 3.76m	13' 0" x 12' 4"
Bedroom 3	2.77m x 3.76m	9' 1" x 12' 4"
Bedroom 4	2.77m x 3.75m	9' 1" x 12' 4"
Bedroom 5	4.86m x 2.60m	15' 11" x 8' 6"



Detached Double Garage
39.15 sqm / 421.4 sqft

COLESBOURNE

165 sqm / 1,778 sqft

SPECIFICATION OVERVIEW

- Exceptionally spacious, detached four-bedroom property
- Energy-efficient, EPC A-rated home
- Sleek roof-integrated Viridian Solar PV panels, 5kW storage battery and market leading NIBE Air Source Heat Pump
- Light and spacious, triple aspect kitchen with NEFF appliances
- French doors from kitchen to patio
- Utility with sink and external door
- Generous, triple aspect living room with French doors to patio
- Separate dining room
- Family bathroom with separate shower
- En suites to bedroom 1 & 2
- Fitted wardrobes to bedrooms 1, 2 & 3
- Double garage with additional off-road parking
- Project EV electric car charging point
- Heritage oak porch

THE COLESBOURNE KEY FEATURES



PLOTS






EPC **A** RATED HOME

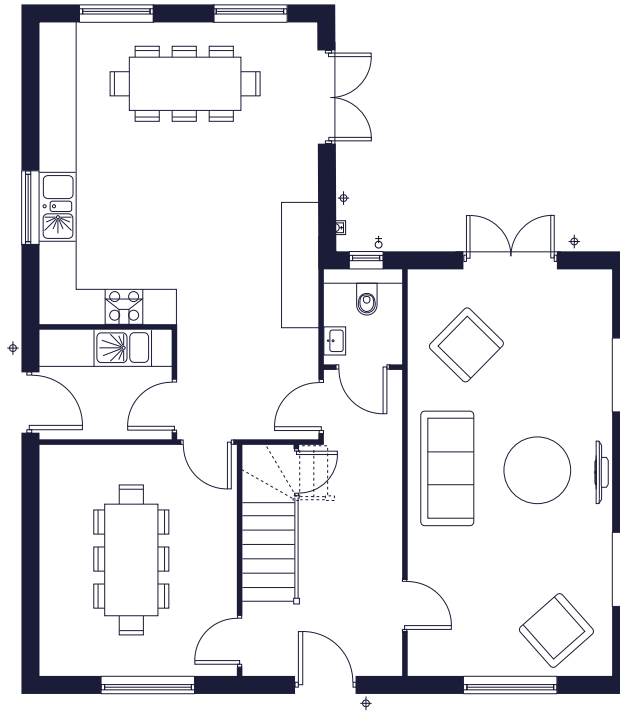
All measurements are approximate and may vary on site. CGIs and floor plans are indicative only and are subject to change. Please refer to the sales advisor for specific details as layout may be mirrored on individual plots.

Free^{man}Homes

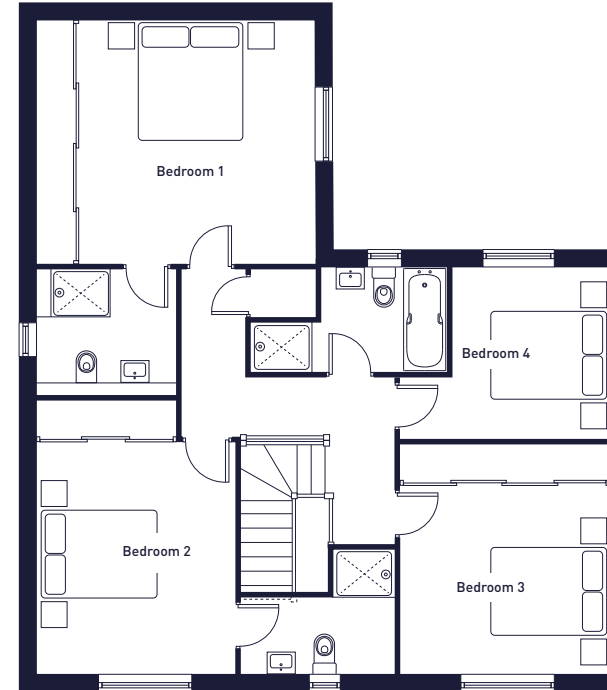
COLESBOURNE

165 sqm / 1,778 sqft

-  Exterior Socket
-  Light
-  Tap



GROUND FLOOR



FIRST FLOOR

PLOTS



HANDED*

Living Room	6.74m x 3.42m	22' 1" x 11' 3"
Kitchen	5.04m x 4.63m	16' 6" x 15' 2"
Dining Room	3.85m x 3.30m	12' 8" x 10' 10"
Utility	1.83m x 2.20m	6' 0" x 7' 3"

Bedroom 1	4.06m x 4.61m	13' 4" x 15' 2"
Bedroom 2	4.59m x 3.30m	15' 1" x 10' 10"
Bedroom 3	3.81m x 3.51m	12' 6" x 11' 6"
Bedroom 4	2.85m x 2.64m	9' 4" x 8' 8"



Detached Double Garage

39.15 sqm / 421.4 sqft

Single Garage - Plot 3

KIFTSGATE

158 sqm / 1,702 sqft

SPECIFICATION OVERVIEW

- Exceptionally spacious, detached four-bedroom property
- Energy-efficient, EPC A-rated home
- Sleek roof-integrated Viridian Solar PV panels, 5kW storage battery and market leading NIBE Air Source Heat Pump
- Light and spacious kitchen with NEFF appliances
- Sit-up breakfast bar
- French doors from kitchen/dining area to patio
- Utility with sink and external door
- Spacious, double aspect living room with French doors to patio
- Separate dual aspect study
- Open gallery landing
- Family bathroom
- En suites to bedroom 1 & 2
- Fitted wardrobes with sliding doors to bedrooms 1, 2 & 3
- Double garage with driveway parking for three cars
- Project EV electric car charging point
- Heritage oak porch
- Private garden

THE KIFTSGATE KEY FEATURES



4 BEDROOMS



TRADITIONAL LAYOUT



FAMILY BATHROOM



2 EN SUITE



FITTED WARDROBES



UTILITY



HOME WORKING



DOUBLE GARAGE



ZERO CARBON LIVING



Red brick, Anthracite roof tiles.

PLOT

4

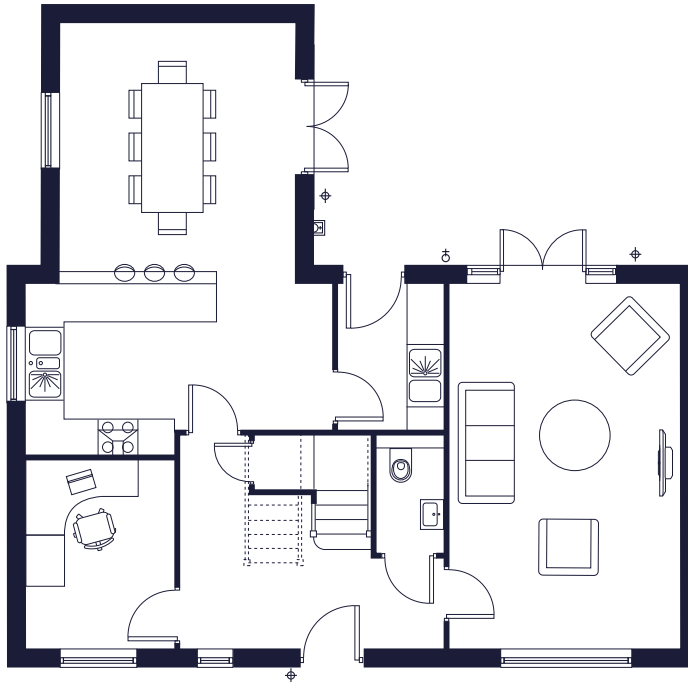
EPC **A** RATED HOME

All measurements are approximate and may vary on site. CGIs and floor plans are indicative only and are subject to change. Please refer to the sales advisor for specific details as layout may be mirrored on individual plots.

KIFTSGATE

158 sqm / 1,702 sqft

- Exterior Socket
- Light
- Tap



GROUND FLOOR



FIRST FLOOR

PLOT

4

Living Room	5.96m x 3.76m	19' 7" x 12' 4"
Kitchen	2.39m x 5.01m	7' 10" x 16' 5"
Dining Room	4.28m x 3.82m	14' 1" x 12' 6"
Utility	2.39m x 1.73m	7' 10" x 5' 8"
Study	3.08m x 2.43m	10' 1" x 7' 11"

Bedroom 1	3.26m x 3.82m	10' 8" x 12' 6"
Bedroom 2	3.76m x 4.08m	12' 4" x 13' 5"
Bedroom 3	2.68m x 3.47m	8' 10" x 11' 5"
Bedroom 4	2.10m x 4.08m	6' 11" x 13' 5"



Detached Double Garage
39.15 sqm / 421.4 sqft

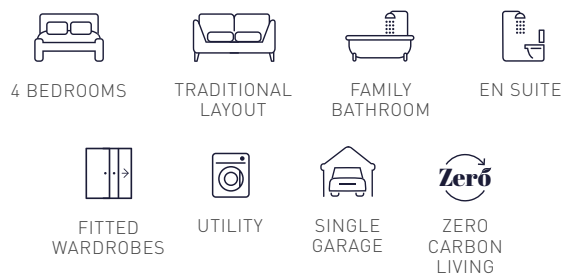
MISERDEN

130 sqm / 1,396 sqft

SPECIFICATION OVERVIEW

- Spacious, four-bedroom property
- Energy-efficient, EPC A-rated home
- Sleek roof-integrated Viridian Solar PV panels, 5kW storage battery and market leading NIBE Air Source Heat Pump
- Spacious, dual-aspect open plan kitchen/dining area with NEFF appliances
- Utility with sink and external door
- Triple-aspect living room with French doors to patio
- Family bathroom
- En suite to master bedroom
- Fitted wardrobes with sliding doors to bedrooms 1, 2 & 3
- Garage with driveway parking with off-road parking
- Project EV electric car charging point
- Private garden

THE MISERDEN KEY FEATURES






PLOT

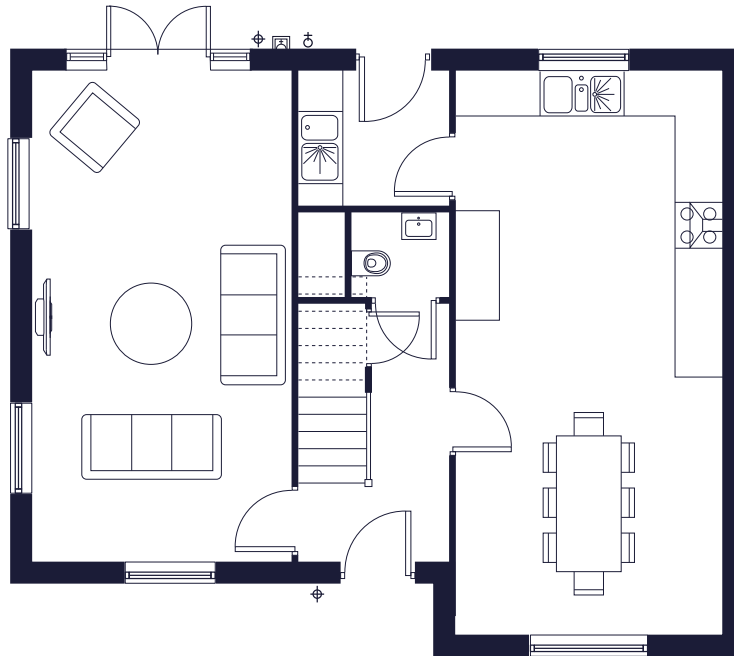
6

EPC **A** RATED HOME

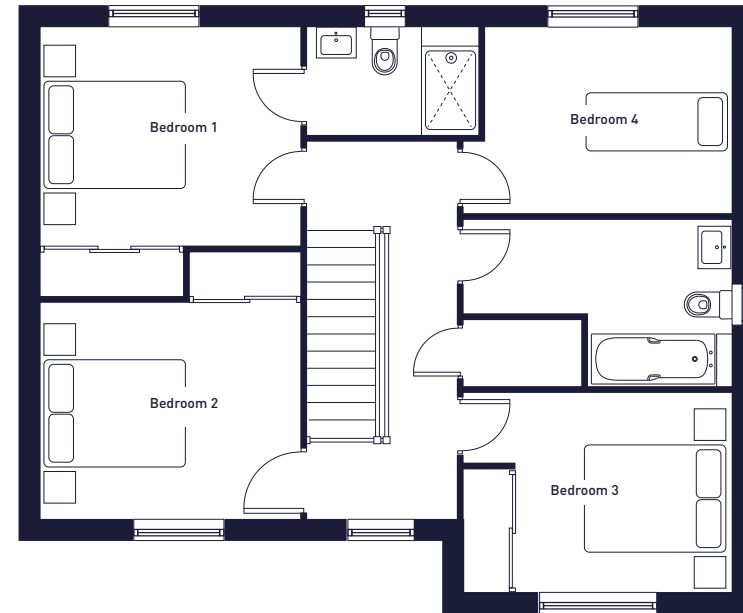
All measurements are approximate and may vary on site. CGIs and floor plans are indicative only and are subject to change. Please refer to the sales advisor for specific details as layout may be mirrored on individual plots.

130 sqm / 1,396 sqft

-  Exterior Socket
-  Light
-  Tap



GROUND FLOOR



FIRST FLOOR

PLOT

6

Living Room	6.63m x 3.51m	21' 9" x 11' 6"
Kitchen/Dining Room	7.65m x 3.60m	25' 1" x 11' 10"
Utility	1.81m x 2.05m	5' 11" x 6' 9"

Bedroom 1	3.65m x 3.51m	11' 11" x 11' 6"
Bedroom 2	3.59m x 3.51m	11' 9" x 11' 6"
Bedroom 3	2.71m x 3.60m	8' 11" x 11' 10"
Bedroom 4	2.52m x 3.29m	8' 3" x 10' 10"



Detached Single garage
19.39 sqm / 208 sqft

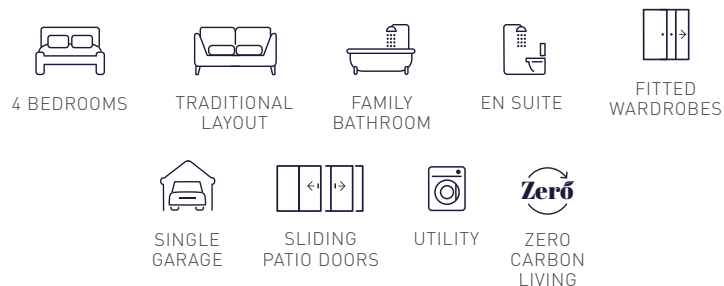
SEZINCOTE

129 sqm / 1,390 sqft

SPECIFICATION OVERVIEW

- Spacious, four-bedroom property
- Energy-efficient, EPC A-rated home
- Sleek roof-integrated Viridian Solar PV panels, 5kW storage battery and market leading NIBE Air Source Heat Pump
- Open plan kitchen/dining area with NEFF appliances and glazed sliding doors that welcome in reams of natural light
- Utility with sink and external door
- Separate living room
- Family bathroom
- En suite to master bedroom
- Fitted wardrobes with sliding doors to bedrooms 1, 2 & 3
- Garage with driveway parking with off-road parking
- Project EV electric car charging point
- Private garden

THE SEZINCOTE KEY FEATURES



PLOTS






EPC **A** RATED HOME

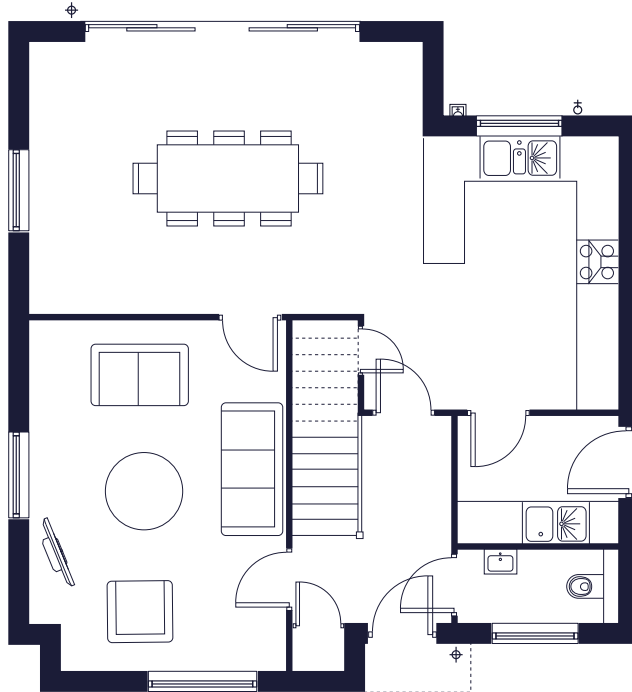
All measurements are approximate and may vary on site. CGIs and floor plans are indicative only and are subject to change. Please refer to the sales advisor for specific details as layout may be mirrored on individual plots.

FreemanHomes

SEZINCOTE

129 sqm / 1,390 sqft

-  Exterior Socket
-  Light
-  Tap

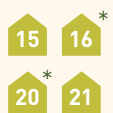


GROUND FLOOR



FIRST FLOOR

PLOTS



HANDED*

Living Room	5.01m x 3.69m	16' 5" x 12' 2"
Kitchen	3.91m x 2.81m	12' 10" x 9' 3"
Dining Room	3.90m x 5.62m	12' 10" x 18' 5"
Utility	1.84m x 2.30m	6' 0" x 7' 7"

Bedroom 1	3.80m x 3.59m	12' 6" x 11' 9"
Bedroom 2	3.50m x 3.31m	11' 6" x 10' 10"
Bedroom 3	3.08m x 2.50m	10' 1" x 8' 2"
Bedroom 4	2.97m x 2.76m	9' 9" x 9' 1"



Detached Single garage
19.39 sqm / 208 sqft

STANWAY

101 sqm / 1,090 sqft

SPECIFICATION OVERVIEW

- Spacious, detached three-bedroom property
- Energy-efficient, EPC A-rated home
- Sleek roof-integrated Viridian Solar PV panels, 5kW storage battery and market leading NIBE Air Source Heat Pump
- Modern and spacious, open plan layout with glazed sliding doors for maximum natural light
- Fully fitted kitchen featuring NEFF appliances
- Family bathroom
- En suite to master bedroom
- Fitted wardrobes with sliding doors to bedrooms 1 & 2
- Garage with driveway parking with off-road parking
- Project EV electric car charging point
- Private garden

THE STANWAY KEY FEATURES


3 BEDROOMS


OPEN PLAN LAYOUT


FAMILY BATHROOM


EN SUITE


FITTED WARDROBES


SLIDING PATIO DOORS


SINGLE GARAGE


ZERO CARBON LIVING



Red brick, Anthracite roof tiles.

PLOT

18

EPC **A** RATED HOME

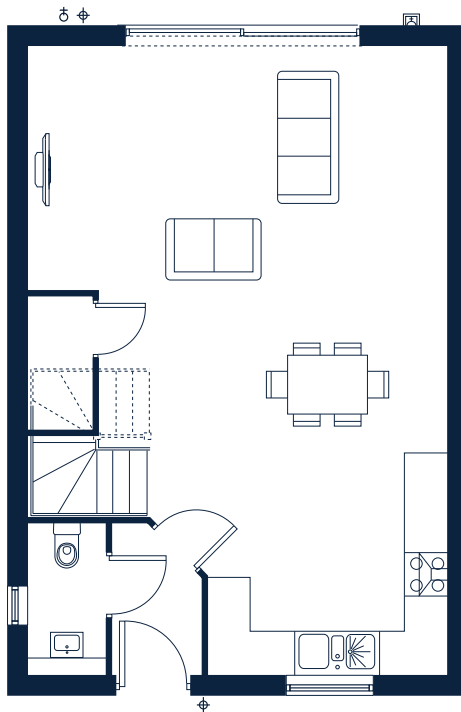
All measurements are approximate and may vary on site. CGIs and floor plans are indicative only and are subject to change. Please refer to the sales advisor for specific details as layout may be mirrored on individual plots.

FreemanHomes

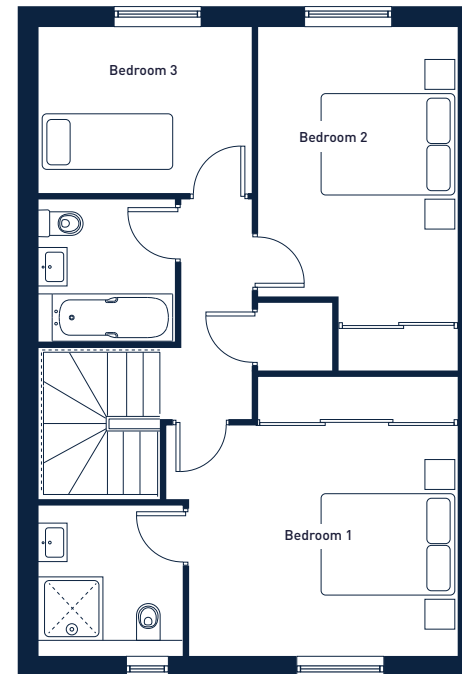
STANWAY

101 sqm / 1,090 sqft

- Exterior Socket
- Light
- Tap



GROUND FLOOR



FIRST FLOOR

PLOT

18

Living Area	3.40m x 5.85m	11' 2" x 19' 2"
Kitchen	2.14m x 3.41m	7' 0" x 11' 2"
Dining Area	3.20m x 4.86m	10' 6" x 15' 11"

Bedroom 1	4.14m x 3.74m	13' 7" x 12' 3"
Bedroom 2	3.60m x 2.79m	11' 10" x 9' 2"
Bedroom 3	2.30m x 3.00m	7' 7" x 9' 11"



Detached Single garage
19.39 sqm / 208 sqft

FreemanHomes

FROM OUR FAMILY, TO YOURS



Spacious Living

Freeman Homes is renowned for its generously proportioned properties, designed to evolve and offer a comfortable living experience for many years to come. Enjoy the luxury of more space with our thoughtfully planned layouts that flow seamlessly throughout the home.

Abundant Storage

Our homes feature an abundance of built-in storage throughout, providing ample space to store your most cherished possessions. This thoughtful detail consistently earns praise from our satisfied customers. We offer house designs and layouts specifically created for right-sizing moves to more manageable, low-maintenance, future-proof, and efficient living spaces.

Uncompromising Quality

Quality is synonymous with Freeman Homes. We build every home ourselves, from the ground up, ensuring they meet our exacting standards.

Peace of Mind

Each of our homes comes with a two-year homeowner warranty from Freeman Homes, along with a 10-year structural NHBC warranty. Our dedicated and friendly customer care team is always ready to assist with any questions or support you may need.

Right-Sizing for Your Lifestyle

Selling a long-held family home can be emotional, but right-sizing is about finding the space that truly suits you. It's not about less, but about the right fit, perhaps fewer bedrooms and a larger living area, or a bigger kitchen-diner instead of a formal dining room. Many buyers are seeking homes that are easier to manage, with practical gardens and flexible layouts. Freeman Homes designs properties to match the way you want to live, offering settings with excellent amenities, strong transport links, and a harmonious connection to the countryside.

Outstanding Customer Service

We prioritise our customers at every stage of the process. From design and construction to handover, we strive to make your experience as stress-free and enjoyable as possible. We take the time to listen to and understand your needs, ensuring a truly personalised journey.

Award-Winning Excellence

Our growing collection of awards for design and innovation stands as a testament to our unwavering commitment to quality and placing sustainability at the heart of everything we do. When you choose Freeman Homes, you can be confident you are investing in the very best. A Freeman home is of the highest quality.



BUILDING FOR A BETTER FUTURE

At Freeman Homes, we recognise that the way we live is constantly evolving, and we are more committed than ever to building for a better future. Our homes provide generous spaces for working, relaxing, and enjoying leisure activities. Set in picturesque countryside, you can connect with nature right from your doorstep, while enjoying the convenience of village life and amenities, with easy access to excellent transport links.

We are a second-generation, family-owned business with a heritage dating back to 1966. Our commitment to excellence remains true to the values upon which our company was founded.

Family is at the heart of everything we do, and we take pride in creating homes where treasured memories are made. We are passionate about the stunning landscapes in which we build, actively seeking exceptional locations for lifestyles of choice.





SUPPORTING THE LOCAL COMMUNITY

Developing sustainable communities for a positive impact on society is core to our vision achieved through working closely with the communities we are growing, supporting local businesses, schools, clubs, and community projects.

GOOD IDENDS

BUILDING FOR A BETTER FUTURE



Twyning Gardens



Affordable Housing
£60,000



Community Infrastructure
£558,450



Transport
£39,550



Education
£132,643



Local Stewardship
£1,060



Refuse & Recycling
£1,533

We are
contributing
£793,236
to Twyning and the
surrounding
local community

LOCAL LINKS

Some useful links to notable, local establishments, amenities and helpful websites we would like to share with you.

EXPLORE

twyningparishcouncil.com
cotswoldmarkets.com/tewkesbury-farmers-craft-1
visittewkesbury.info
tewkesburynaturereserve.org.uk

DESTINATIONS & EXPERIENCES

cheltenhamfestivals.org
butcombe.com/the-fleet-inn-gloucestershire
hilton.com
tewkesburymedievalfestival.co.uk
johnmooremuseum.org/events
tewkesburylive.co.uk
visittewkesbury.info/eat-drink

EDUCATION

twyningschool.co.uk
tewkesburyacademy.clf.uk



Twynning Gardens

TWYNING, GLOUCESTERSHIRE

A PERSONALISED JOURNEY

At Freeman Homes, we pride ourselves on putting our customers at the heart of everything we do. Experience a personalised homebuying journey where your individual needs are listened to and valued. As a family-run business, we understand the importance of the finer details and personal touches, making your move stress-free and enjoyable.

Our dedicated after-sales team is on hand to provide support and assistance long after your completion day. Your friendly and effective direct point of contact will be our Customer Services Manager, who will stay in touch and ensure your ongoing satisfaction.

*“Don’t just take our word for it.
Here is what some of our customers have said:”*

“All the local people we spoke to commented on Freeman Homes’ reputation for good quality building. Once we approached them we couldn’t fail to be impressed. We highly recommend Freeman Homes for the quality of their work and caring attitude”

R & H Moir

“It has been a real pleasure to deal with them. I cannot recommend them highly enough and am happy to thank them for all their assistance”

Mr David Allen

“The location, design, and build of my new home are amazing. From my initial interest, to purchase and aftercare, the staff were helpful and informative – nothing was too much trouble.”

Mrs T Mills

“They were very easy to deal with, very gracious, trustworthy and reassuring. Buying a house can be stressful, but it was so refreshing. I recommend them to everyone, and my in-laws even moved into one!”

Kate

“I have to congratulate you and your company for the amazing build quality, lovely touches, and of course a brilliant aftercare service. We love the house and really appreciate everything everyone has done for us!

A lovely team of people and outstanding efforts to all those involved. It has been an absolute pleasure dealing with everyone - it’s made the whole journey so much less stressful.”

Diane & Tim



Talk to our friendly team today

01594 543354

twyning@freemanhomes.co.uk

www.freemanhomes.co.uk

FreemanHomes
A division of the MF Freeman Group



library.polishing.publish



Twyning Gardens, Twyning, Gloucestershire, GL20 6BQ



FreemanHomes

ENERGY-EFFICIENT
EPC A-RATED HOMES



Twyning Gardens

TWYNING, GLOUCESTERSHIRE

HBF Home
Builders
Federation



Customer Satisfaction 2025

By FreemanHomes

